



Heated Whelping Nest

Manufactured by Lovett's (Formerly Scott's)



- Ⓢ Reduces mortality of newborn animals
- Ⓢ Thermostatically controlled
- Ⓢ Keeps puppies warm
- Ⓢ Safe and easy-to-clean

Lovett's (formerly Scott's) Heated Whelping Nest reduces mortality in newborn puppies, and produces healthier, more vigorous pups.

Did you know that 30% of puppies die before weaning? The majority of those deaths are due to insufficient heat from an inconsistent heat source.

Chilling is the single greatest danger to the newborn. During the first week of life, peripheral blood vessels do not have the capacity to constrict or retain heat. If the puppy's body temperature falls below 95 degrees F, it can reduce metabolism and depress vital functions.

Once a puppy becomes chilled, instinct tells the mother to reject it to avoid risk to the others. The newborn becomes susceptible to infection, and can often (due to visceral paralysis) become an ineffectual nurser.

Visceral Paralysis is paralysis of the soft organs of the body, and along with paralyzing the esophagus, can also paralyze the stomach. When that happens, whatever milk that may be in the stomach won't be able to digest and will sour. There are many problems that can snowball into the loss of a puppy. A large part of those problems can be prevented if the puppy's body temperature is kept from falling below 95 degrees F. The

heated whelping nest not only reduces mortality, but produces healthier, more vigorous offspring and plays an important part in reducing stress on the female.

Now there are quite a number of heating aids on the market, but none that can maintain a constant, even temperature no matter what the surrounding environment. The Whelping Nest has an electronic heat sensor that constantly gauges the temperature and adjusts it accordingly. This maintained temperature, next to eating, is the most important element in a young puppy's life. You'll be surprised at the increased rate of gain and how much more healthy and vigorous your puppies will be.

The dish shaped nest simulates a natural nest and serves the important function of keeping the pups all together in one area, making the bitch's job much less stressful. You don't use newspapers or blankets with the whelping nest. The plastic surface of the dish and a finished floor are much easier for the female to keep clean, and you'll find she does a better job.

If you save one puppy, you've paid for the nest. Believe me, once you've used the whelping nest you'll never raise another litter without it.

- ⓐ 23" outside diameter and 1.25" deep
- ⓐ Maintains a constant surface temperature - unaffected by surrounding environment or number of puppies
- ⓐ Evenly conducts heat throughout the nest without hot or cold spots.
- ⓐ Temperature will only vary + or - one degree F from set temperature. Unit will stop radiating heat when desired temperature is reached and reactivate when heat source falls below desired temperature.
- ⓐ Supplemental heat must be selective between 90-100 degrees F. Less than 90 degrees will extract heat from the puppies. Over 100 degrees may cause dehydration and hyperthermia. Supplemental heat applies to the surface only. Air temperature should be approximately 70 degrees F.
- ⓐ Adaptable to practically any facility in which animals may be kept.
- ⓐ Recessed circular design meets the natural needs and instincts of mothers and newborns.
- ⓐ Allows the breeder to insert the whelping nest into whatever size whelping box is required for their breed.

***The Heated Whelping Nest can be purchased from: QuinnCarlin Distributors Ltd.,
Phone: 403-843-4370, www.quinn-carlin.ca/store, info@quinn-carlin.ca***



HEATED WHELPING NEST

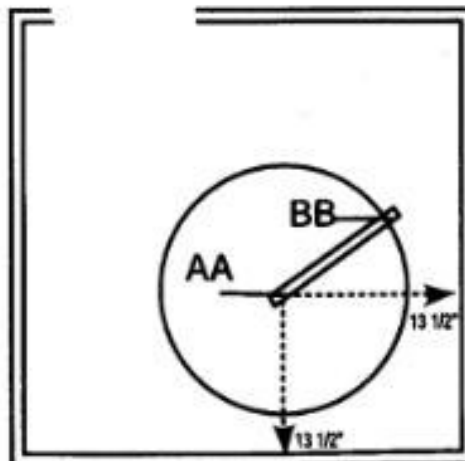
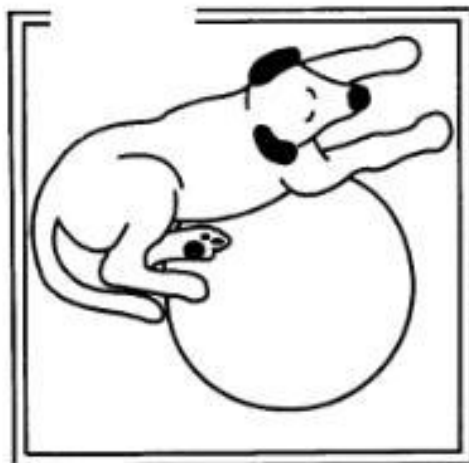
INSTRUCTIONS

STEP ONE

Be sure the whelping floor is large enough for bitch to lay stretched out without interfering with the nest. If possible, the female should have room to circle the nest, before lying down.

STEP TWO

Determine the center of the nest on whelping floor and mark a minimum of 13 1/2" from both sides of box. Cut off floor marker strip found at the bottom of inside pages. Nail floor marker to center of the floor at point A. Insert pencil through floor marker at point B. Mark your circle and cut out.



*The Heated Whelping Nest can be purchased from: QuinnCarlin Distributors Ltd.,
Phone: 403-843-4370, www.quinn-carlin.ca/store, info@quinn-carlin.ca*

STEP THREE

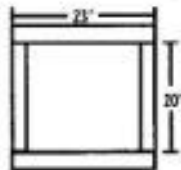
If whelping box sets on floor, use a 2 x 4 on edge to raise box above floor, this will provide proper clearance for the nest. Determine where cord will come out of box and cut a 3/4" notch, or drill a 1 1/4" hole. Attach nest to floor with 3/4" stainless steel screws (enclosed) locating cord to proper side.

IMPORTANT

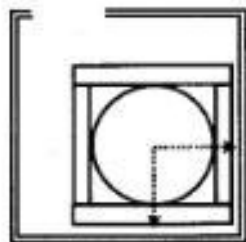
No portion of the electrical cord should be exposed to the dog.

STEP FOUR

After cutting hole in the floor make a 2 x 4 frame for added strength to prevent top ring of the nest from breaking off. Cut two 20" 2 x 4 s and two 23" 2 x 4 s. Nail or screw together as shown.



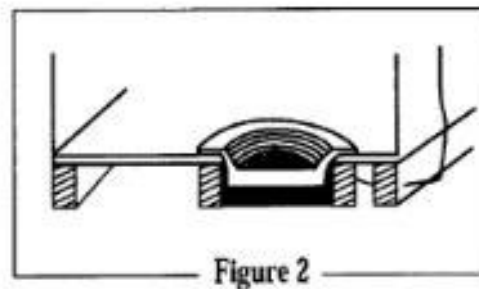
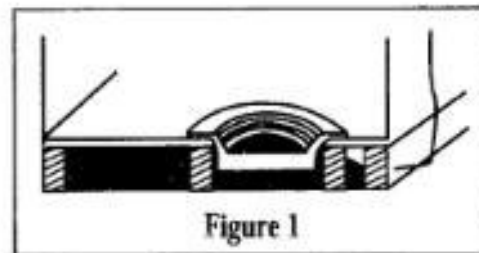
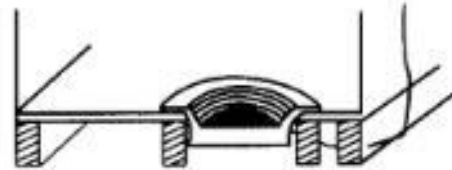
After nailing or screwing the 2x4 s together place them as a frame around the hole underneath the whelping nest floor. Then screw the frame to the floor.



STEP FIVE

INSULATING YOUR WHELPING NEST

If the nest is exposed to the outdoor cold air, we recommend insulating the entire floor of the whelping area (Figure 1). This method will be more comfortable for the bitch as well as the pups; however, if you choose not to use this method, the nest alone should be insulated (Figure 2).



***The Heated Whelping Nest can be purchased from: QuinnCarlin Distributors Ltd.,
Phone: 403-843-4370, www.quinn-carlin.ca/store, info@quinn-carlin.ca***

STEP SIX

TEMPERATURE SETTING

Whelping Nest comes pre-set at 95°F. Temperature adjustment control (D), is located behind plastic, screw-in plug (C). Whelping nest has a setting range of approximately 90 to 100°F. Turn control (D), counter clockwise to lower temperature, clockwise to raise the temperature. Temperature changes about 2°F per click.

RECOMMENDED SETTINGS

- 90°F for heating pad
- 95°F whelping and pups.
- 100°F for stress pad

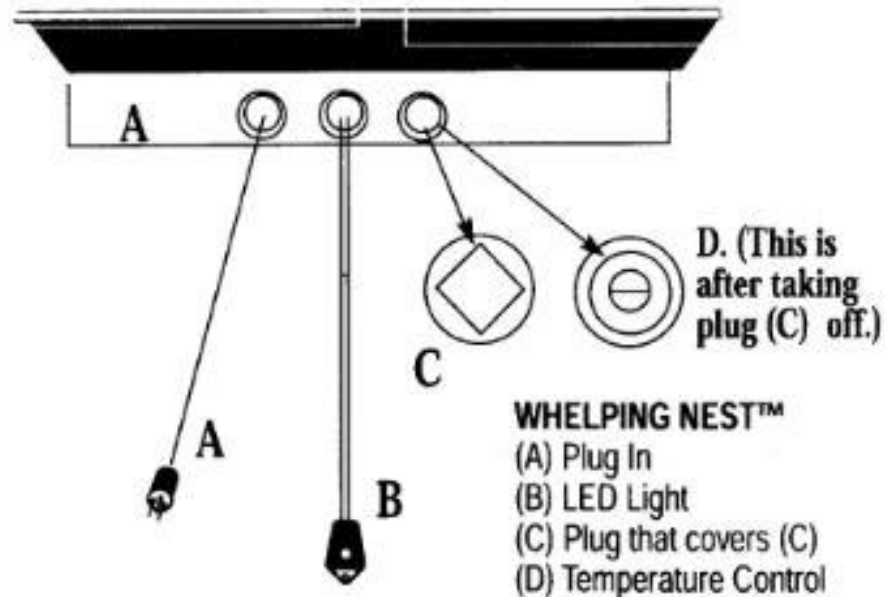
NOTE:

If the air temperature is 80 to 85°F or higher, the whelping nest can be turned OFF.

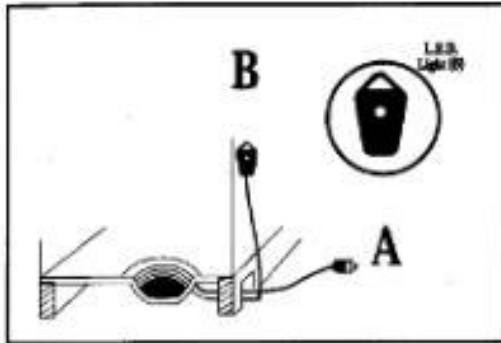
We've put the temperature control setting purposefully in a hard to reach location. Once set, temperature does not need to be constantly adjusted. The Whelping Nest, unlike most heat pads, will constantly adjust itself to set temperature.

TEMPERATURE

To determine if the temperature you've selected is ideal for the situation, observe the habits of the puppies. If temperature is ideal, you will find the pups nestled together. If too warm, pups will leave the nest. We recommend setting the whelping nest on 95°F. The whelping nest should be used for at least 3 weeks after the puppies are born.



*The Heated Whelping Nest can be purchased from: QuinnCarlin Distributors Ltd.,
Phone: 403-843-4370, www.quinn-carlin.ca/store, info@quinn-carlin.ca*



THE LED LIGHT

The LED light (B), will come on and stay on once the nest rises to the set temperature. If the light should go out, check to see if the plug (A), is secure. If the LED stays out, then the unit is below setting and not working correctly. To secure the LED (B) to the wall, use a nail or screw to hang.

STRESS PAD

Animals suffering hypothermia or trauma can be aided in recovery by using the Whelping Nest as a stress pad set at 100°F.

STEP SEVEN

Included with your Heated Whelping Nest is a temperature strip to periodically check the temperature of your whelping unit. To properly check the temperature of your unit:

1. Lay the temperature strip flat in the Whelping Nest.
2. Cover the temperature strip with a folded dry towel.
3. Let the unit run for 15 minutes and check the temperature strip reading.

The proper reading is as follows:

GREEN: Exact temperature
 TAN: Deduct 1°
 BLUE: Add 1°

IMPORTANT NOTE:

Do not remove the white strip from the back of the temperature strip. This will allow you to reuse the strip again.

SUPPLEMENTAL HEAT

The whelping nest can also be used as supplemental heat for adult dogs in winter time. We recommend setting the temperature selector at 90° F.

LOVETT'S ELECTRONICS

840 E. Pinckley St.
 Brazil, IN 47834

Phone 812-446-1093

*The Heated Whelping Nest can be purchased from: QuinnCarlin Distributors Ltd.,
 Phone: 403-843-4370, www.quinn-carlin.ca/store, info@quinn-carlin.ca*